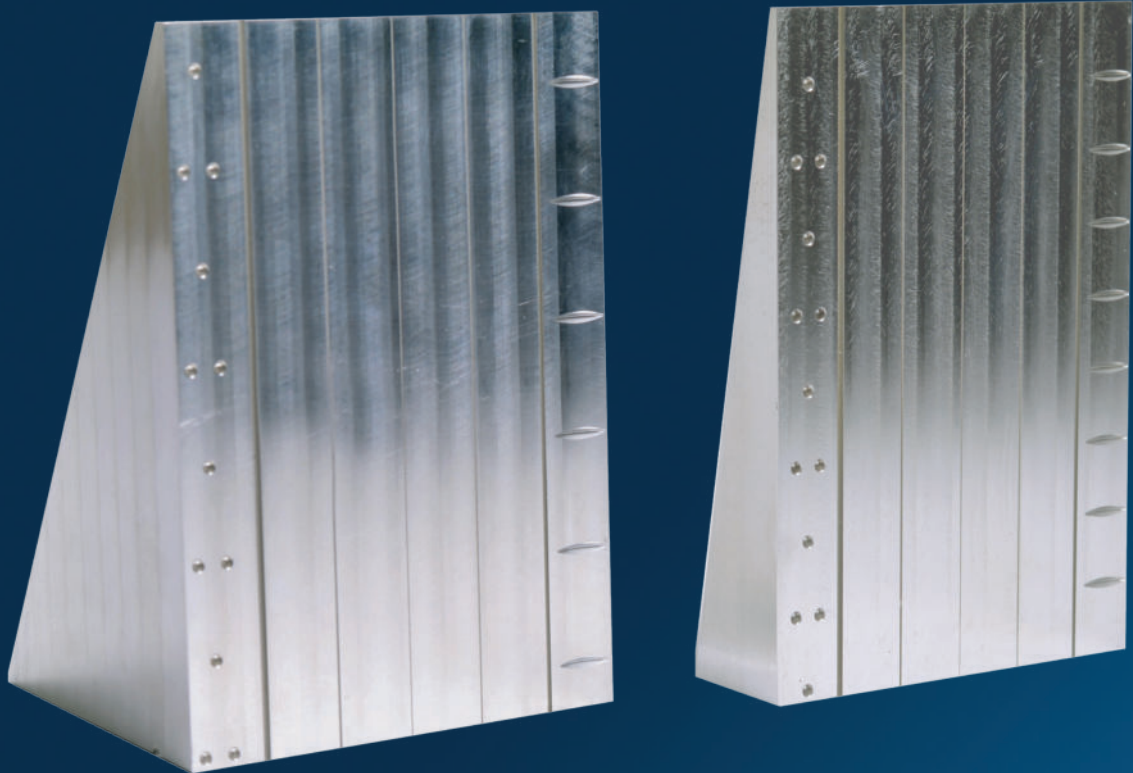


DR PHANTOM

**5-Groove Wedge and DR Phantom
according to ASTM E2737**



**Performance Evaluation and Long-Term-Stability Test
for DDA systems according to latest standards and
specifications**

Digital Detector Array Performance Evaluation and Long-Term-Stability Tests

The standard ASTM E2737 describes the evaluation of DDA systems for industrial radiology. It is intended to ensure that the evaluation of image quality, as far as this is influenced by the DDA system, meets the needs of users, and their customers, and enables process control and long term stability of the DDA systems.

These tests are to monitor the system performance for degradation and to identify when action needs to be taken if the system degrades by a certain level – i.e. influenced after repairs, hardware-/ software upgrades.

5-Groove Wedge

Simple to set-up and use universal test wedge according to ASTM E2737 - available in two versions. Selection shall base on the most stringent material used in the application.



5-Groove Wedge
Heavy Metal
made of stainless steel

Article no. 11 00170



5-Groove Wedge
Light Metal
made of aluminum

Article no. 11 00171

DR Phantoms

These DR Phantoms are designed for special applications, but also proposed for monitoring DDA performance.

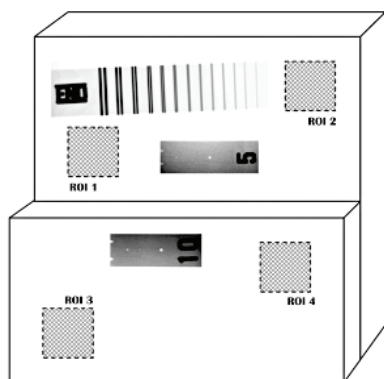
Duplex Plate Phantom

Described in ASTM E2737,
but also for special inspection set-up dimensions, only.

Two flat plates made of the material used in the application
or of the most stringent material, and with the thickness
suitable to the object to be inspected:

Bottom Plate

Top Plate, half size of Bottom Plate



Duplex Plate Phantom - set-up

Duplex Wire Type IQI - ASTM E2002/ ISO 19232-5

Article no. 11 00155

Hole Type Indicator - ASTM E1025 or E1742

Article no. depending on size/ type

DR Phantom TAM – Aviation

Special design for Aerospace Industries –
turbine blade inspection

Step wedges with 7 steps – acc. to TAM ...

IQI plaques acc. to TAM .../ ASTM E1742

made of the material used in the application or of the most
stringent material i.e. Titanium and Inconel

Duplex Wire Type IQI - ASTM E2002/ ISO 19232-5

BAM snail



DR Phantom TAM

Article no. 11 00310



Adapter Plate

Article no. 11 00311



Made in
Germany



KOWOTEST

Gesellschaft für Prüfausrüstung mbH

Solinger Strasse 186
D-40764 Langenfeld

Fon: +49 2173 - 223 83
Fax: +49 2173 - 223 35

www.kowotest.de
info@kowotest.de



Western Canada

Address: 15803 - 145 Avenue N.W.,
Edmonton, Alberta, T6V 0H8

Central Canada

Address: 5949 Ambler Drive,
Mississauga, Ontario, L4W 2K2

www.stuarthunt.com

ndt@stuarthunt.com

Toll-Free: 800-661-4591