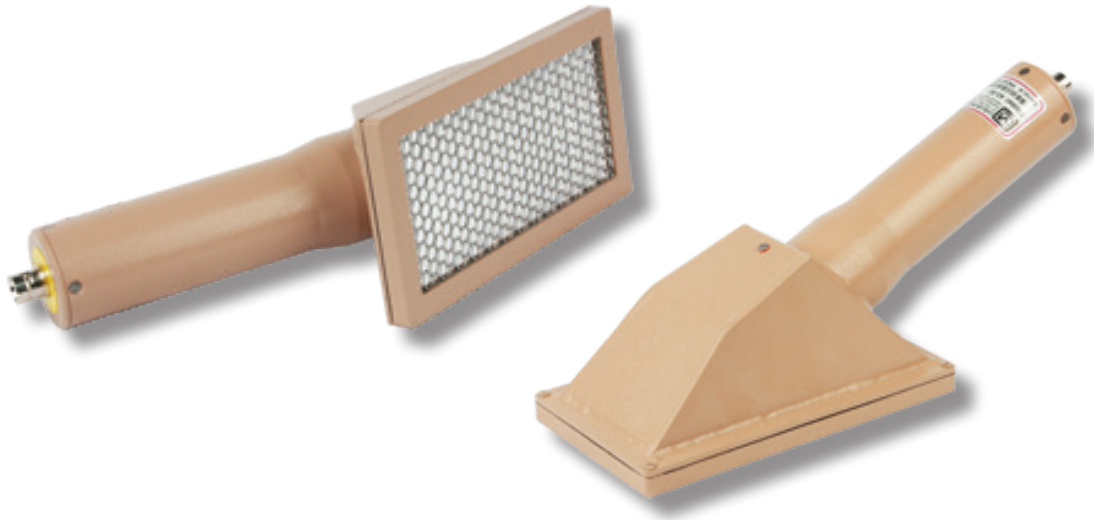


## Model 43-90 Alpha Scintillation Detector



### Specifications

Part Number: 47-2448

**INDICATED USE:** alpha survey

**SUGGESTED INSTRUMENTS:** general purpose survey meters, ratemeters, and scalars

**DETECTOR TYPE:** ZnS(Ag) scintillator

**WINDOW:** 0.8 mg/cm<sup>2</sup> metalized polyester

**WINDOW AREA:**

Active: approx. 125 cm<sup>2</sup> (19.4 in<sup>2</sup>)

Open: approx. 100 cm<sup>2</sup> (15.5 in<sup>2</sup>)

**PROTECTIVE SCREEN:** 0.76 mm (0.030 in.) stainless steel,  
6.4 mm (0.25 in.) hex, 79% open  
Outer Dimensions (L x W): 190 x 100 mm (7.5 x 3.9 in.)

**EFFICIENCY (4 $\pi$ ):** <sup>239</sup>Pu: 20%

**TYPICAL BACKGROUND:** 3 cpm or less

**DETECTOR UNIFORMITY:** 10% or less from average reading

**PHOTOMULTIPLIER TUBE:** 38 mm (1.5 in.) diameter

**OPERATING VOLTAGE:** typically 500 to 1000 V (1500 V max.)

**TEMPERATURE RANGE:** -20 to 50 °C (-4 to 122 °F)

**ENVIRONMENTAL RATING:** IP rating of 63

**CONNECTOR:** series "C", unless specified otherwise

**CONSTRUCTION:** aluminum with beige powder coating

**SIZE (H x W x L):** 10 x 10 x 33 cm (4 x 4 x 12.25 in.)

**WEIGHT:** 0.68 kg (1.5 lb)